


Do you have lots of writing deadlines coming up in March and need support? Look no further! Our Science Peer Writing Assistants (PWAs) are upper-year students who specialize in assisting with writing lab reports, research papers, and all other science assignments for 1st and 2nd-year courses. In these one-on-one appointments, PWAs will help you work on your papers, whether you want to meet expectations around style, structure, use of technical vocabulary, or any other writing issue. The best part? You can book 2 appointments per week, every week—that means you can work through your entire paper, from beginning your research to that final edit, with our team!! Learn more and book today: <http://queensu.mywconline.com>

Study In Canada Scholarships

 The call for applications to the Study In Canada Scholarship program, run by EduCanada, has now opened. Successful candidates will receive scholarships for four months or one academic term of study or research at the college, undergraduate or graduate levels or for five to six months of study or research at the graduate level. All applications from Queen's University must be submitted by the Office of the Vice-Provost, International, on behalf of candidates. There is no limit to the number of candidates per university. All faculty members are eligible to apply. To obtain the application form and for more information on how to apply, please email the Office of the Vice-Provost, International at vp.international@queensu.ca. The internal deadline for applications is **Friday, March 5, 2021**.



"Queen's University Scientista is thrilled to present our 4th annual conference, Empower! We invite you to join us on Sunday, March 21st, 2021, from 11am-4pm for an invigorating day consisting of a discussion panel, keynote speeches, and interactive workshops featuring speakers across different sectors of Science, Technology, Engineering, Mathematics, and Medicine. We aspire to provide engaging and thought-provoking conversations to ensure self-identifying women, gender non-conforming individuals, and allies in STEMM feel confident and empowered on their paths to success.

Register as a delegate for \$8 here: <https://hopin.com/events/queen-s-scientista-presents-empower>"

PLAN SELECTION 2021 for 1st year students

The plan selection period will open on SOLUS from May 17th to May 28th, 2021.
Check out the Plan Selection page for details (<https://www.queensu.ca/artsci/undergrad-students/plan-selection>)

Please do not hesitate to connect with us for further discussions (appointments can be set up using Zoom this year).



Are you going into 4th year 2021-2022 – here are a few reminders!

BIOL 537

Faculty Project Profiles and Application are now updated for 2021-2022 and can be found at: <https://biology.queensu.ca/academics/undergraduate/courses/honours-thesis-course/>

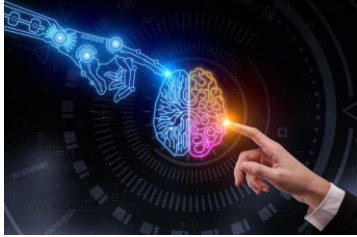
✚ Breakdown on BIOL 537:

1. Applications due *March 22nd, 2021*
2. Offer List to be released on the BIOL537 webpage *April 14th, 2021* (*late offers will come out after)

3. Students acceptance/decline date is *April 23rd, 2021*

BIOL 500 Seminar Courses

We are currently working on a course teaching plan for next year. We hope by mid-April to have the application and the BIOL 500 course offerings and descriptions ready to send to you.



~~~~~

### **BIOL 307 Spring Field Course Offering Coming! (Instructor to be announced)**



A field course on biodiversity patterns and urban ecology is being developed for remote delivery this summer (May to August 2021). More details to come in the following weeks.

PREREQUISITE BIOL 102/3.0 and BIOL 103/3.0 and (registration in a BIOL Major, BIOL Science Minor/General, BIMA Specialization, BIPS Specialization, BTEC Specialization, or EBIO Specialization Plan).

~~~~~

BIOL 401 Spring Term 2021 Offering!

BIOL401 will run this coming Spring term. Class starts May 11, 2021 and taught by Drs. Yuxiang Wang and Barry Madison. If you are interested, let us know so that we can register you manually this year.

BIOL 401/3.0 Experimental Approaches to Animal Physiology

Laboratory-based course emphasizing experimental approaches to understanding the principles of animal physiology covered in BIOL 339/3.0.

LEARNING HOURS 108 (36Lb;12T;60P)

PREREQUISITE A minimum GPA of 2.0 in the Biological Foundations List.

COREQUISITE BIOL 339/3.0.



BIOL 404 - Summer 2021

BIOL 404 will be offered this coming summer. It will be offered twice, once in May and again in August. If you are interested, let us know so that we can register you manually this year.

Please note that because these are two-week courses, the add/drop dates are different from full term summer offerings.

BIOL 404 – April 23 to May 7, the last date to **add the course is April 23 at mid-night.**

BIOL 404 – August 13 to August 27, the last date to **add the course is August 13 at mid-night.**

Course details can be found at: <https://130.15.90.125/BioLab/biol404.html>



BIOL 404/3.0 Techniques in Molecular Biology

Intensive laboratory work (8h/day) to be carried out over two and a half weeks in May. Practical work includes DNA isolations, DNA cloning, PCR, production of proteins, biochemical and immunological analysis of proteins. NOTE Priority to students registered in BIOL Major and Specialization degree Plans. See course website for details.

LEARNING HOURS 112.5 (100Lb;12.5P)

PREREQUISITE (BCHM 218/3.0 or BIOL 330/3.0) and a minimum GPA of 2.0 in the Biological Foundations List.

Need help with your studies?

Please visit Student Academic Success Services (SASS) at <http://sass.queensu.ca/>. SASS offers academic support to students who wish to develop their skills in critical thinking, reading, learning, studying, writing and self-management.

Wondering how to contact your course program associate regarding work associated with the lab component of core courses?

BIOL 102: biol102@queensu.ca

BIOL 103: biol103@queensu.ca

BIOL 200: biol200@queensu.ca

BIOL 205: biol205@queensu.ca

BIOL 206: biol206@queensu.ca

BIOL 212: biol212@queensu.ca

BIOL 300: biol300@queensu.ca

Important Links



Updates on Fall 2020 and Winter 2021 <https://www.queensu.ca/artsci/fall2020>

Updates on COVID-19: <https://www.queensu.ca/covidinfo/>

REMINDERS!

Biology Degree Plans

Review your degree plan requirements and make sure you are selecting courses you need. Degree plan requirements can be found at: <https://www.queensu.ca/artsci/undergrad-students/academic-calendar>

Biological Foundations List - IMPORTANT!

It is very important to keep this GPA requirement in mind throughout your program, starting with first year. To be admitted to 400 and 500 level Biology courses, you will need a minimum GPA of 2.0 in any previously taken courses from Biological Foundations list.

The Biological Foundations List is BIOL 102, 103, 200, 212, (201, 202), 205, 206, 300, 330, 334, 339, and 341 (BIOL 302, 303).

To be admitted to BIOL 400 and 500 level Biology courses you will need a minimum cumulative GPA of 2.0 in any previously taken courses from this list.

Helpful Links

[Information on Applying for a Course Prerequisite Waiver](#)

[Arts and Science Academic Deadlines](#)

[Arts and Science Calendar](#)

[Frequently Asked Questions](#)

QUBS Quick Links

Website: <https://qubs.ca>

Facebook: <https://www.facebook.com/QUBioStation>

Twitter: https://twitter.com/QUBS_Director

Flickr: <http://www.flickr.com/photos/qubsoutreach>

YouTube: <https://www.youtube.com/user/QUBScam>

Looking for a job? [Quick Link](#)

Looking for study and travel opportunities? [Quick Link](#)

BIOLOGY Undergraduate Office (normal non-COVID-19 operations)

Mon to Friday 8:30am – 12:00pm and 1:00pm – 3:00pm

Rm. 3109d, BIOSC Complex

613-533-6344

ug.biology@queensu.ca

NOTE: Use email to correspond during COVID-19 as we are working remotely.